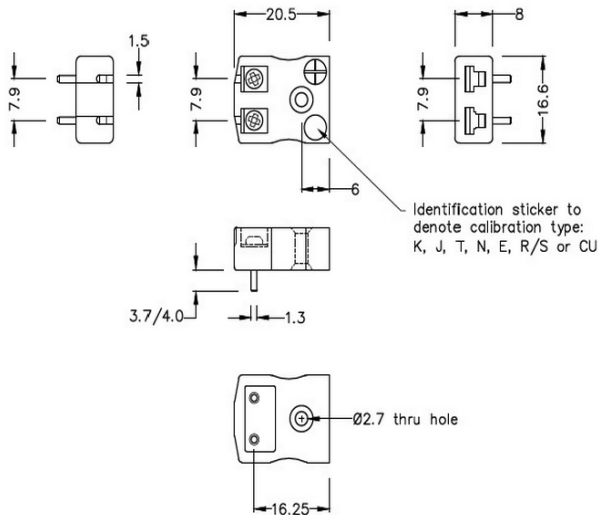
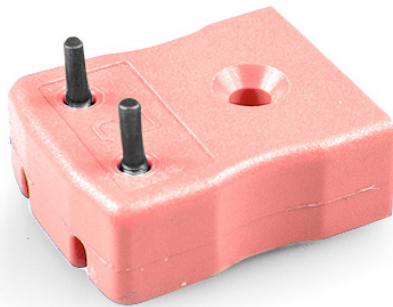
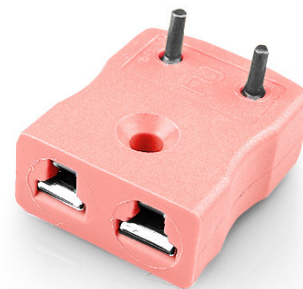


# PCB Mounting Thermocouple Connector Socket IM-N-PCB Type N IEC with Tin Plated Pins



**Miniature PCB Socket**  
(dimensions in mm)



Labfacility are the UK's leading manufacturer of Temperature Sensors, Thermocouple Connectors and associated Temperature Instrumentation and stockings of Thermocouple Cables. The Company has been trading since 1971 and is ISO9001 accredited.

**PCB Mounting Thermocouple Connector Socket IM-N-PCB Type N IEC with Tin Plated Pins**

These items are not available to order online so please call or email our sales team with your required quantity for price and delivery information.

Specially designed for PCBs, solid tin plated pins for direct board mounting & provision for CJC sensor

**Specifications****Specifications**

<b>Product Code</b>	XE-1259-TIN
<b>General Description</b>	Versatile, high quality circuit board mounting miniature socket
<b>Thermocouple Type</b>	N IEC
<b>Connector Type</b>	PCB socket
<b>Connector Size</b>	Miniature
<b>Colour</b>	Pink
<b>Max. Temperature</b>	220°C
<b>Pins</b>	Tin Plated
<b>+Positive Contact</b>	Nickel / Chromium / Silicon
<b>-Negative Contact</b>	Nickel Silicon
<b>Standards Met</b>	BS EN 50212:1997. RoHS