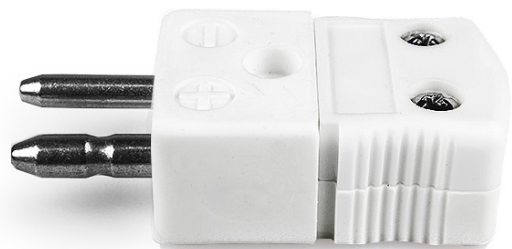


Standard High-Temperature (650°C) Ceramic Thermocouple Plugs IS-E-M-HTC Type E IEC



Labfacility are the UK's leading manufacturer of Temperature Sensors, Thermocouple Connectors and associated Temperature Instrumentation and stockings of Thermocouple Cables. The Company has been trading since 1971 and is ISO9001 accredited.

Lead time for these items can be around 4 - 5 weeks. You will be contacted by our sales team with more details and delivery update after ordering.

Please use the 'Product Enquiry' tab on the right if you require more information before ordering.

Product code: IS-E-M-HTC

Heavy Duty Ceramic Body for use up to 650°C

Plugs fitted with solid thermocouple pins

All connectors supplied coloured white with IEC coloured dot on body

Specifications

| | |
|--------------------------|------------------|
| Product Code | XE-1643-001 |
| Type | High Temperature |
| Thermocouple Type | Ceramic |
| Colour | White |
| Max. Temperature | 650°C (1200°F) |
| Min. Temperature | -29°C (-20°F) |